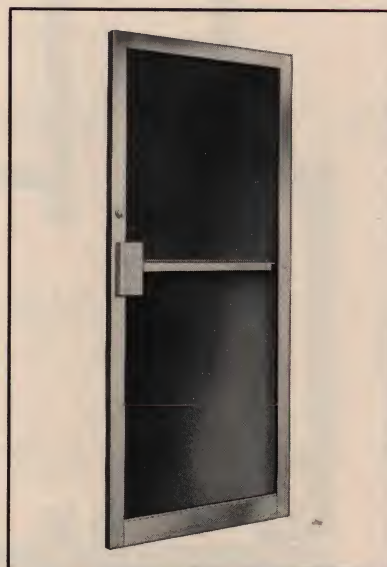
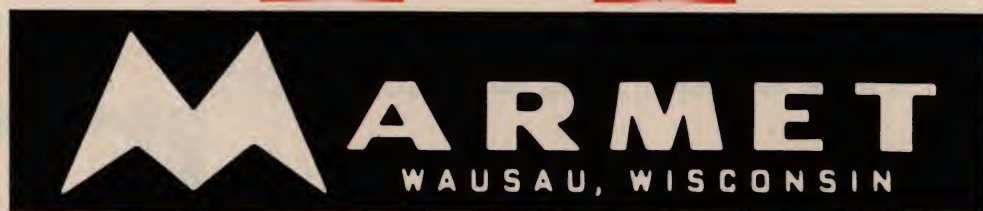


A-1-A FILE NUMBER 16-E



*featuring the*  
**1000**  
and  
**2200**  
series

A-1-A FILE NUMBER 16-E

**ALUMINUM ENTRANCES**

catalog 60-d

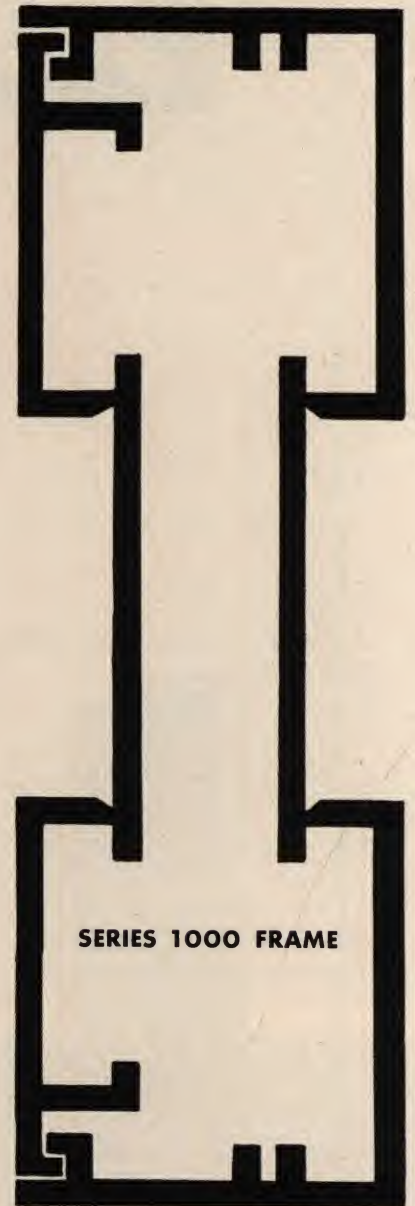
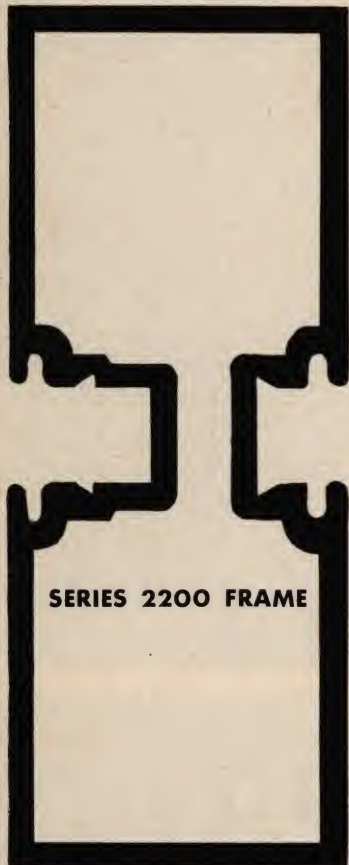


# ALUMINUM DOORS

## series 1000 & 2200

Series 1000 doors and entrances have been designed to meet all monumental entrance requirements, meeting at the same time the structural strength requirements of complex ornamental entrances.

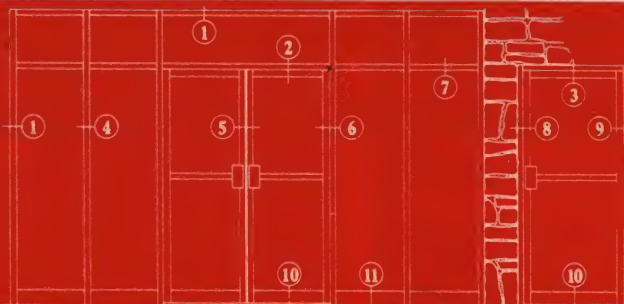
Series 2200 stock doors and entrances introduce an unusual, practical flush glazing design that increases glass area, reduces installation time and heightens the appearance of the entire entrance.



FULL SIZE SECTIONS

### ELEVATION

for complete specifications see page four

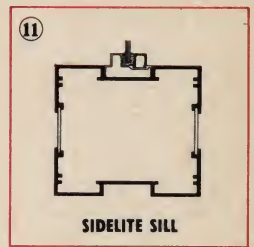
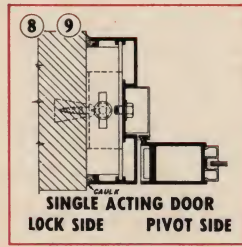
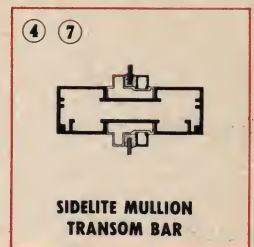
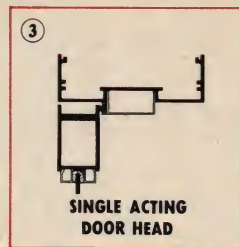
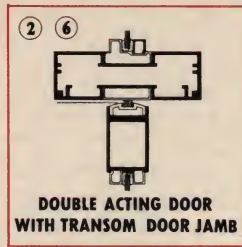
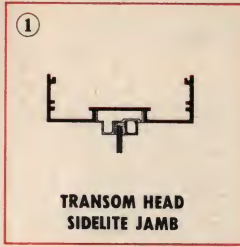




# MONUMENTAL DOORS & ENTRANCES

TYPICAL DETAIL SCALE 1½"=1'0"

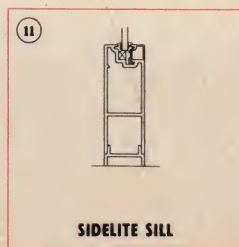
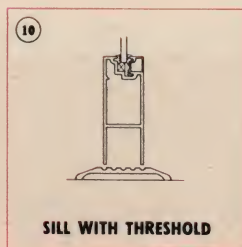
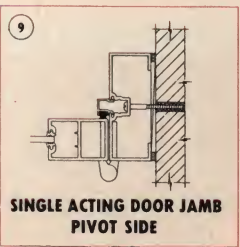
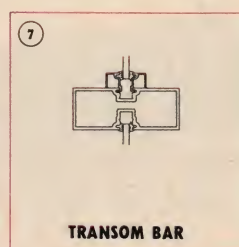
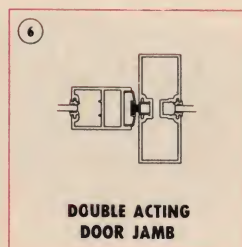
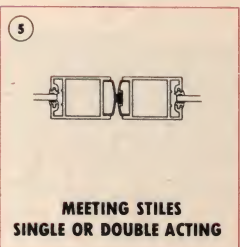
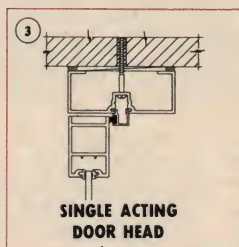
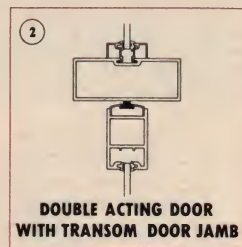
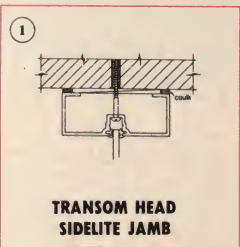
SERIES 1000



# STOCK DOORS & ENTRANCES

TYPICAL DETAIL SCALE 1½"=1'0"

SERIES 2200



**sizes**  
single doors  
2'6" x 7'0"  
3'0" x 7'0"  
3'6" x 7'0"  
double doors  
Pair 2'6" x 7'0"  
Pair 3'0" x 7'0"  
Pair 3'6" x 7'0"



# DOOR SPECIFICATIONS

	series 1000	series 2200
<b>GENERAL</b>	Furnish extruded aluminum doors and/or entrances of size and type as indicated on drawings as manufactured by Marmet Corporation, Wausau, Wisconsin.	
<b>MATERIAL</b>	Sections shall be of extruded aluminum alloy 6063-T5 (63S-T5), which has an ultimate tensile strength of 27,000 pounds per square inch. All sections shall have a nominal thickness of 1/8". Glazing bead shall be no less than .040" thick.	
<b>CONSTRUCTION</b>	Corners shall be butted, bolted and secured with concealed welds making a hairline joint. Welds shall be electric arc weld to develop complete fusion of metals. Glazing stops shall be interlocking grip type which exposes no screws. Cut or machined ends and recesses shall be true, accurate and free from rough edges and burrs. Joints shall have neat, accurate and secure fit.	
<b>FINISH</b>	Doors and entrances shall be finished with a 204-C2 alumilite finish, which shall be applied after complete fabrication. (Finish samples shall be furnished on request.)	Doors and entrances shall be finished equal to Alcoa's 204-A1 finish. (Finish samples shall be furnished on request.)
<b>HARDWARE</b>	Hardware shall be furnished and installed by the door manufacturer. Unless otherwise specified, these doors will be furnished with 1 1/2 pair of ball bearing butts, one cylinder deadlock, one push bar and one pull plate.	Hardware shall be furnished and installed by the door manufacturer. Unless otherwise specified, these doors will be furnished with: one pair of pivots, one cylinder deadlock, one push bar and one pull plate.
<b>WEATHERSTRIP</b>	Frames shall be weatherstripped with plastic backed wool pile, around the perimeter of the frame as detailed. Double door meeting stiles shall be weatherstripped as shown on details.	Frames shall be weatherstripped with vinyl in place of plastic backed wool pile, around the perimeter of the frame as detailed. Double door meeting stiles shall be weatherstripped as shown on details.
<b>SHOP DRAWINGS</b>	Prior to executing any work under this contract, complete shop drawings in quantities desired, showing all work to be furnished shall be submitted for approval.	Shop drawings for standard sizes need not be submitted. Shop drawings for non-standard sizes shall be submitted in accordance with specifications for Series 1000, left.
<b>PROTECTION</b>	To prevent damage to finish, the general contractor shall protect aluminum surfaces from contact with mortar, plaster, and all harmful substances and damage resulting from careless use of tools or materials.	
<b>CLEANING</b>	Aluminum surfaces shall be thoroughly cleaned, following removal by the general contractor, of all protective applications. No acid, caustic, or abrasive cleaning agents shall be employed, but only plain water, or mild soap and water; or as directed by door manufacturer. Damage resulting from the use of other cleaning materials shall be the responsibility of the general contractor.	

DISTRIBUTED BY

For Marmet Aluminum Windows and Curtain Wall, refer to the Manufacturers Index  
of the Sweet's Architectural Catalog File and Sweet's Construction Catalog File



**MARMET**

**CORPORATION  
WAUSAU, WISCONSIN**

Digitized by:



ASSOCIATION  
FOR  
PRESERVATION  
TECHNOLOGY,  
INTERNATIONAL  
[www.apti.org](http://www.apti.org)

BUILDING  
TECHNOLOGY  
HERITAGE  
LIBRARY

<https://archive.org/details/buildingtechnologyheritagelibrary>

From the collection of:

Carol J. Dyson, AIA